



## Green Diesel Flash-Scan 3 Tool Instructions

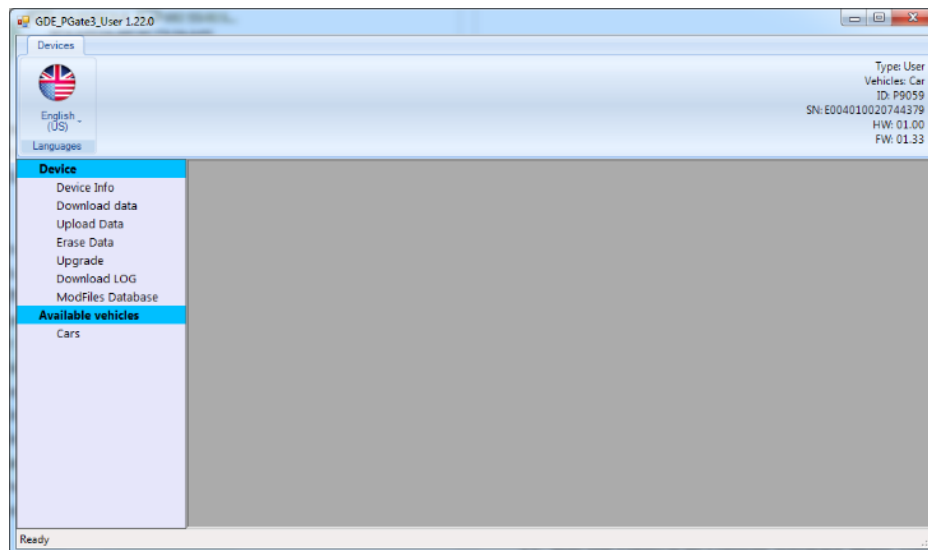
GDE Flash Tunes are installed and modified by our new touch screen hand-held programmer. The tool is delivered after being tested for functionality. Below are step by step instructions for installing the software on a PC and using all the tool's capabilities.

**If you have Windows 8 / 8.1, please follow instructions in Appendix B to disable Driver Signature Enforcement.**

1. Download the latest version of User Software from:

<https://drive.google.com/file/d/0BzGOOyguKqqEYVRsUDRrbWtqTIE/view?usp=sharing>

2. Make sure your computer is connected to the internet and then launch the application to install the software interface and follow the instructions on screen. Select "continue" for any windows compatibility messages. For Windows 7 and Vista: After installed, right click on the flash scan icon on the desktop, select "run as administrator". This prevents random error messages.
3. At the end of installation the software will automatically open and a message box will be present prompting you to connect the device. Perform this step using the supplied USB cable. Please note: The software will now automatically update itself with the latest contents, so it is imperative that your internet connection is active. Depending on its speed and the updated required, this step could take some time.
4. Once the updates are complete, you will arrive to the main window of the user tool:

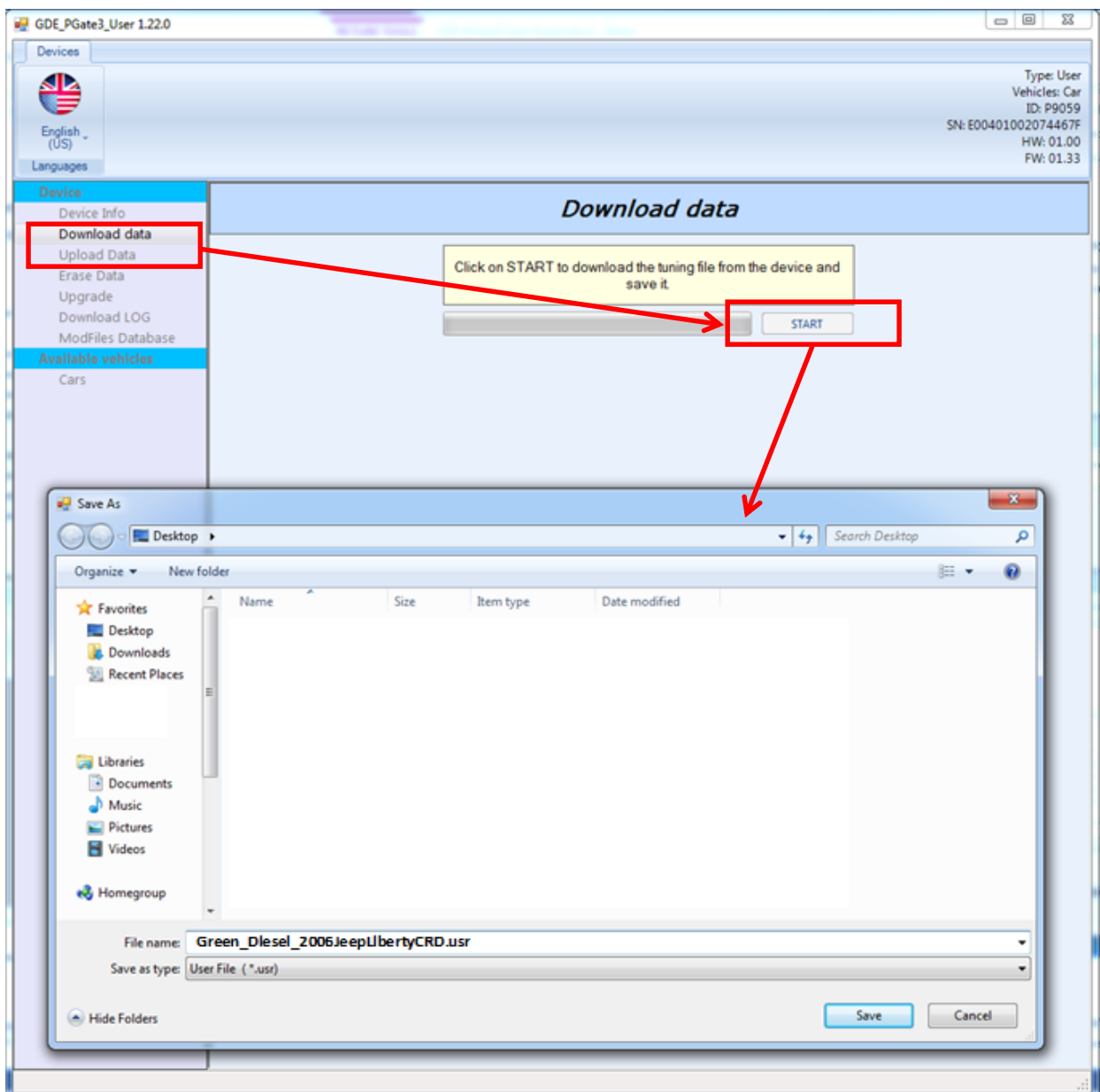


5. At this point the program can be closed and the tool disconnected from the PC.
6. Using the supplied tool-to-OBD cable, connect the Flash-Scan 3 tool to your vehicle's Diagnostic Port connector making sure that the ignition is in the run position (all lights on the dashboard should be lit up). **Do not start the engine.**



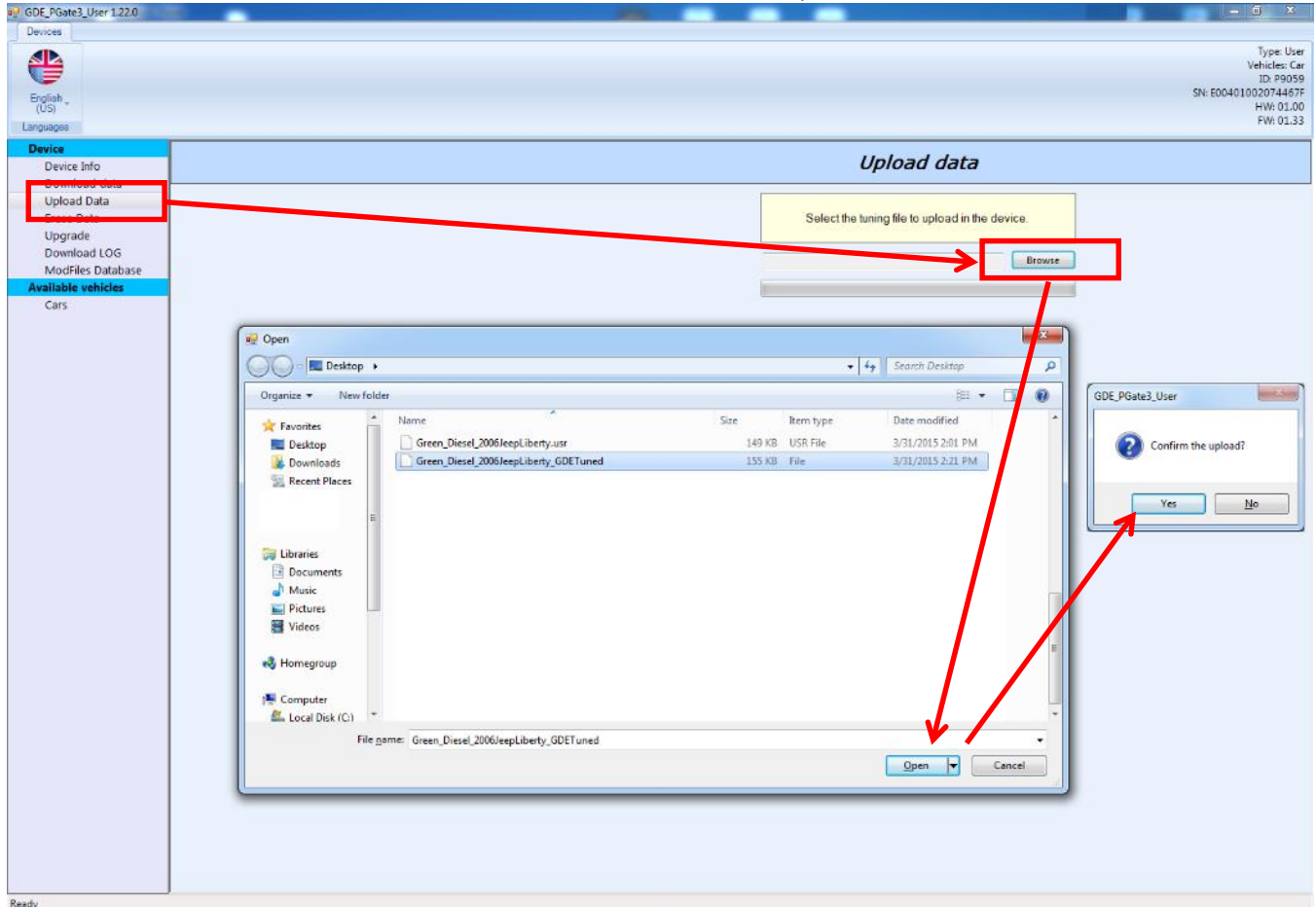
7. After connecting to the car, the tool will boot up and is now ready to perform the stock ECU calibration. Select the “Tuning” option in the upper left-hand corner and follow the on-screen instructions to select your appropriate vehicle and read the file.
8. After the read operation is completed with the tool, reconnect the Flash-Scan 3 tool with your PC and re-open the user console (there is an icon now on your desktop from the prior installation). Select the option “Download Data” and click “START” in the main window.

When the operation is complete, save the file on your desktop with the name as indicated:  
<First Name>\_<Last Name>\_<Vehicle Type>.usr





- Email the file you just saved to the GDE Support Team: [info@greendieseleurope.com](mailto:info@greendieseleurope.com)
- You will receive back from GDE a file named <First Name>\_<Last Name>\_<Vehicle Type>\_GDETuned . This file can be saved anywhere on your PC, we recommend in the same directory as the file obtained in step 8.
- Reconnect the Flash-Scan 3 tool and open again the user console software. Choose the option “Upload Data” and then click the “BROWSE” button to select the file received in step 10.



When the upload is completed, a message will appear indicating “Data has been written.”

- The user console software can now be closed and the tool disconnected from your PC.
- Return to your vehicle with the PGate3 tool. First place the ignition in the “RUN” position as before and then reconnect the tool to your diagnostic port. **Make sure to not start the engine.**
- In some cases, the tool will automatically re-verify the installed tune file and will then prompt you to proceed with the reflash. If not, select again “TUNING” in the upper left hand corner of the screen and the same prompt will appear.



**GREEN DIESEL  
EUROPE**

[www.greendieseurope.com](http://www.greendieseurope.com)

15. After selecting yes, a screen will appear showing the available tunes. There will be at top the Original File (stock tune) and depending on the options you purchased, one or more GDE tunes will be available.
16. Select the appropriate tune you wish to flash and then select the right arrow to begin the process. Depending on the type of vehicle you have, the process could take 30 minutes or more. However, in most cases the tune will install in under 8 minutes.
17. Once the operation is completed, you are ready to begin enjoying your newly-tuned vehicle!

***Please note that the PGate3 Flash Tool is locked to the VIN of your vehicle and can only be used with it. If you wish to use your PGate3 tool in the future on a different vehicle (due to sale of vehicle, loss/stolen, etc) please contact Green Diesel Europe for available options.***



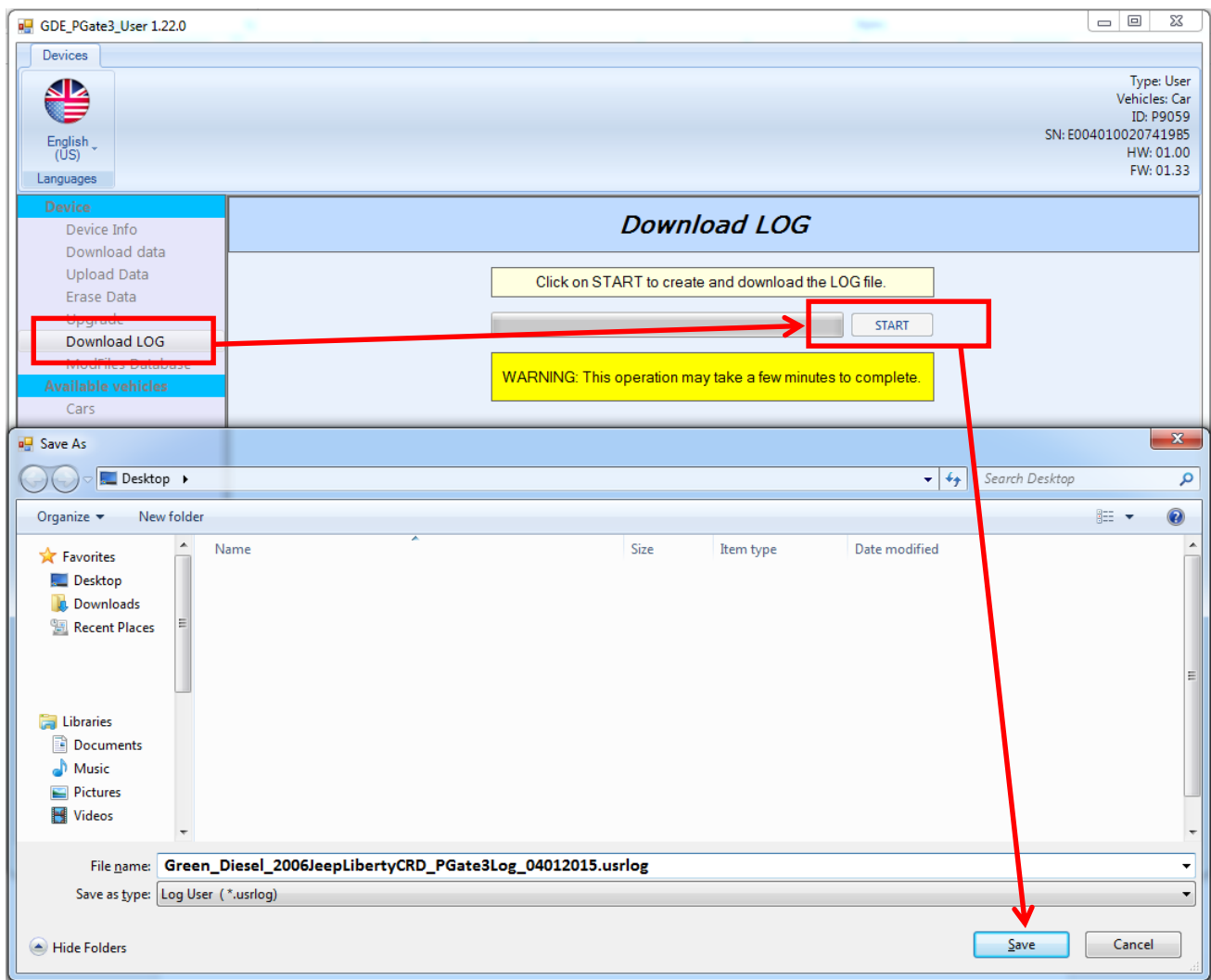
## Appendix A: What to do in case of tool errors

In 99% of all circumstances, the PGate3 tool works without any issues to you the customer. However, in case of an error during the reading and/or writing process, or for any other errors the tool might have, the below steps will help you to send us the necessary information from your tool for further support.

1. Connect the PGate3 tool to your PC and then open the user console software.
2. In the left side menu, click on "Download LOG" and then in the main window click "START".

When the "Save As..." window appears, please save the file with the name in the indicated format:

<First Name>\_<Last Name>\_<Type of Vehicle>\_PGate3Log\_<Date>.usrlog



3. Email the user log file to: [info@greendieseurope.com](mailto:info@greendieseurope.com) for processing and feedback.

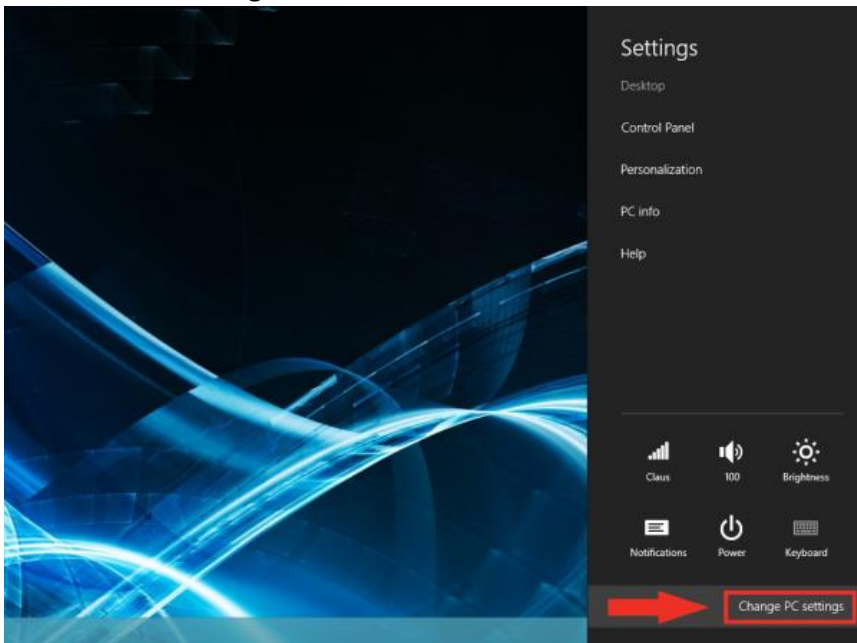


## Appendix B: Windows 8 / 8.1 – Disable Driver Signature Enforcement

1. Hold down the Windows key on your keyboard and press the letter C to open the Charm menu, then click the gear icon (**Settings**).

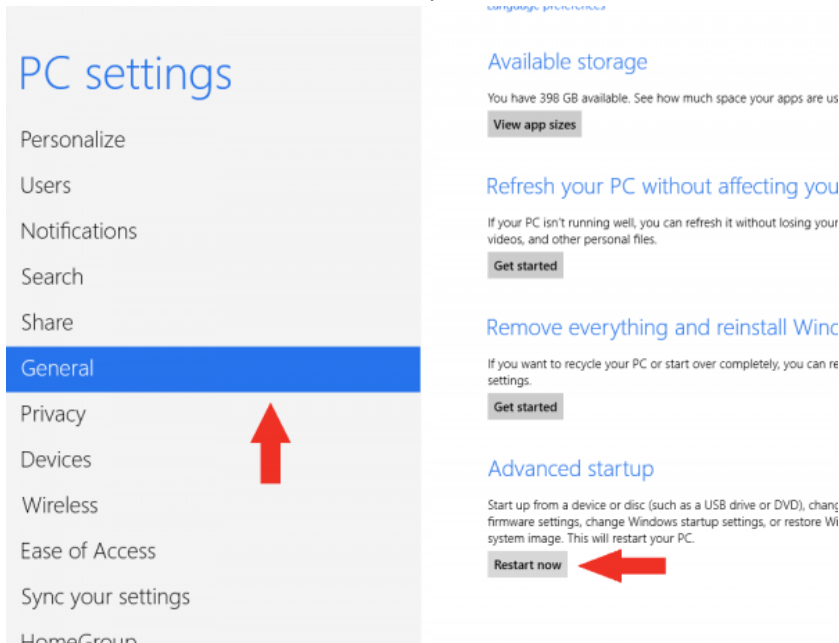


2. Click **More PC Settings**



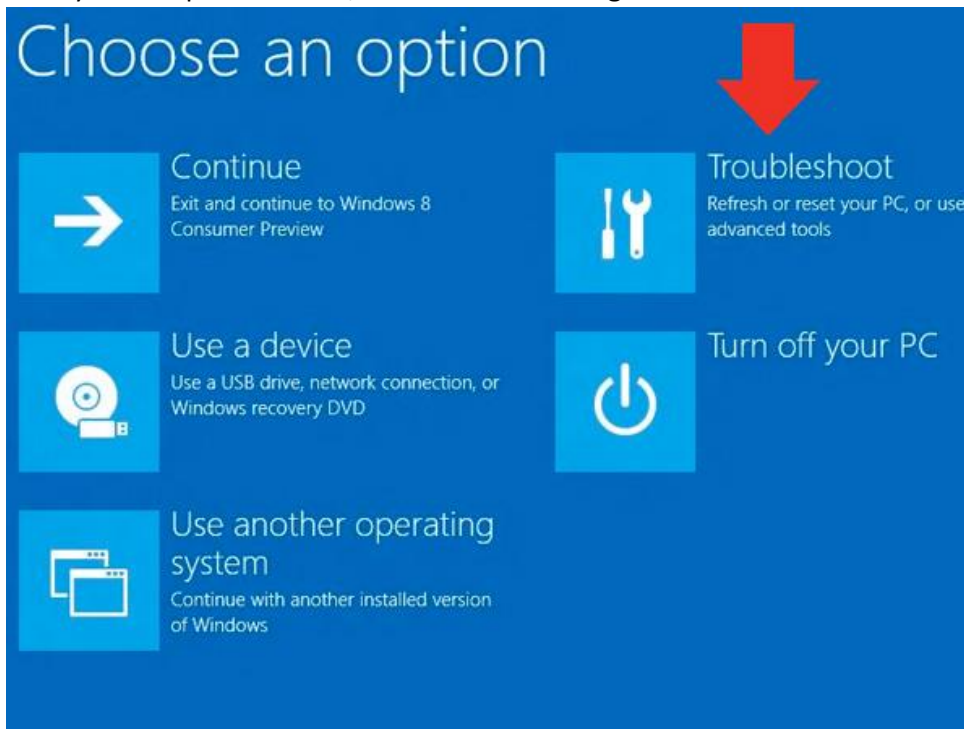


3. Click **General**
4. Windows 8: Under *Advanced Startup*, click **Restart Now**



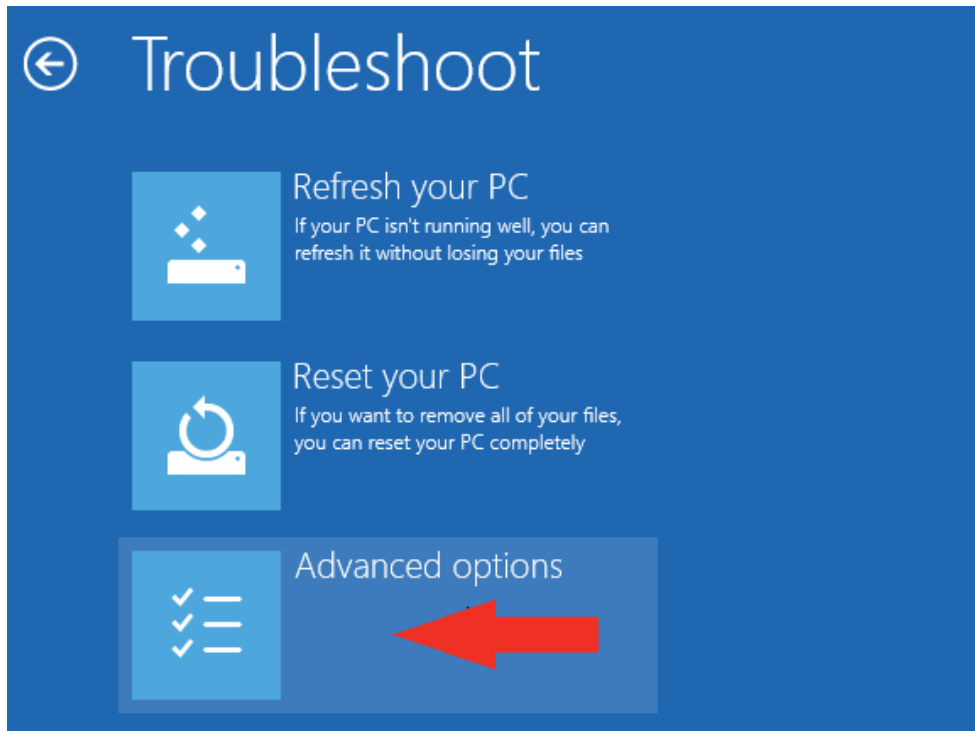
Windows 8.1: Change PC Settings -> Update & Recovery -> Recovery -> Restart Now

5. After your computer restarts, click **Troubleshooting**

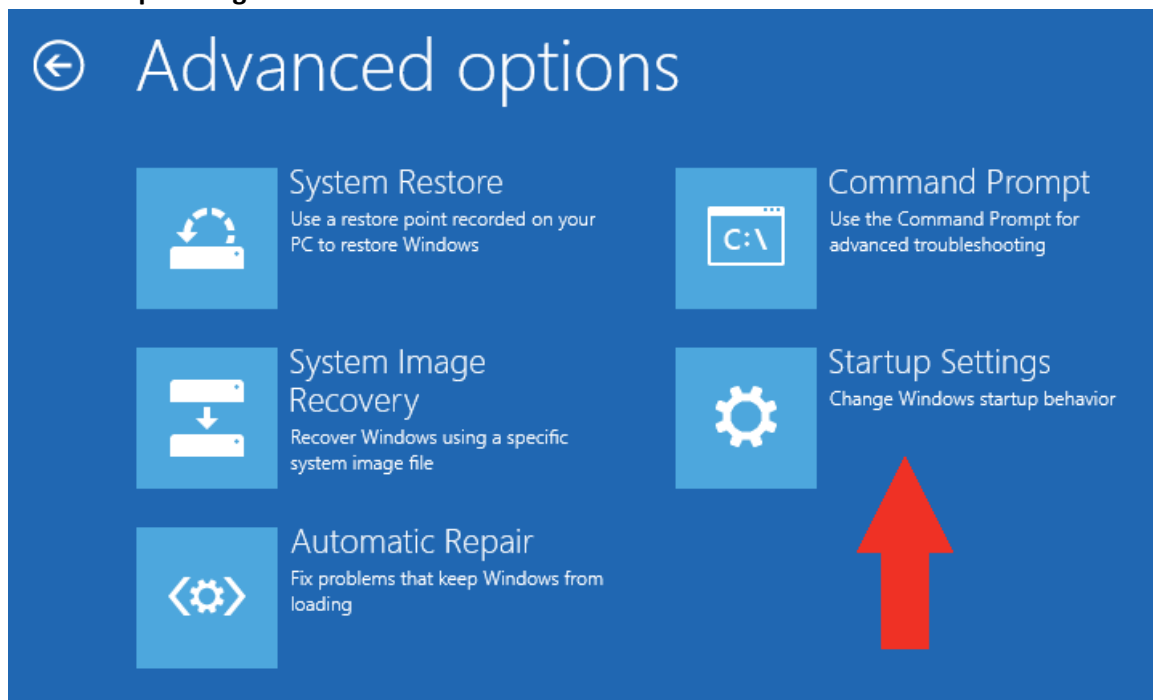


6. Click **Advanced Options**



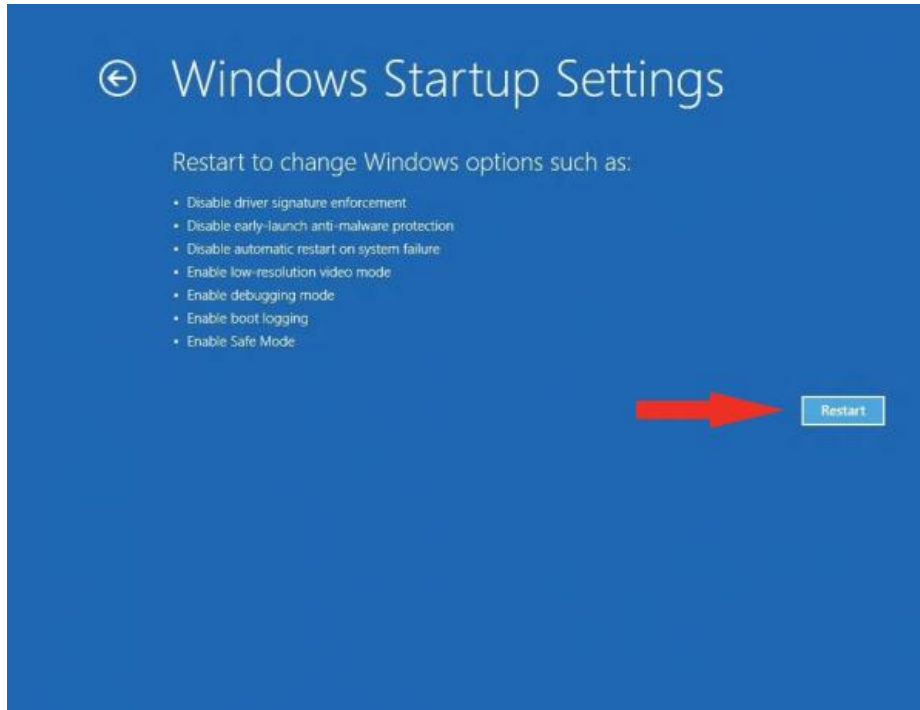


7. Click **Startup Settings**

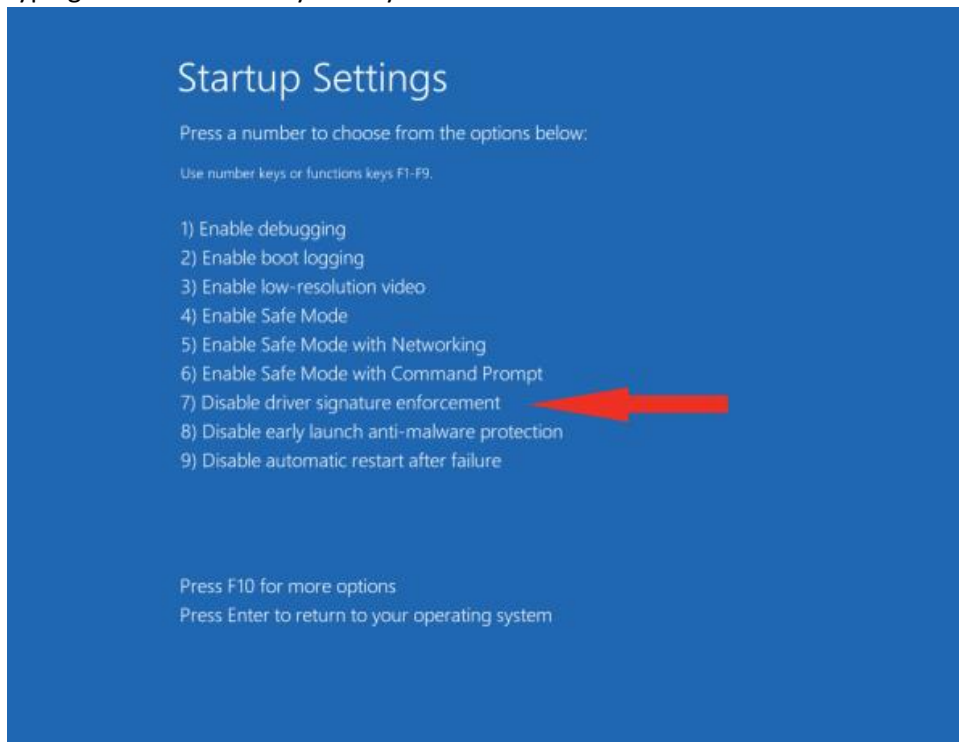


8. Click **Restart**





9. After restarting your computer a second time, choose **Disable driver signature enforcement** from the list by typing the number 7 on your keyboard.





10. After restarting, you can proceed to install the GDE Flash-Scan 3 Console software. You might see the below message box indicating that Windows cannot verify the publisher of the drivers. Please click **Install This Driver Software Anyway** in order to continue the installation process.

